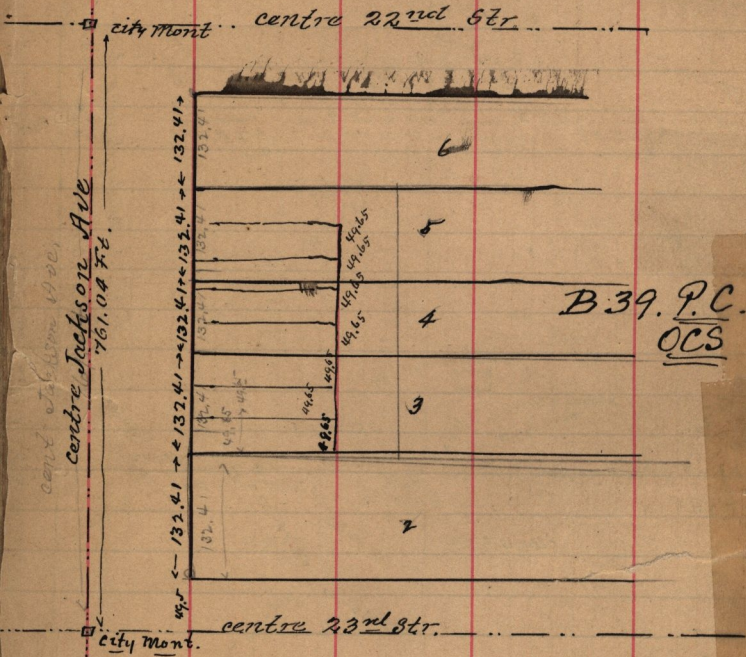


Pt Lots. 3-4-5- B39. P.C. OCS Beg. S.W.  
Cor. 3. N 24 r. E 9 r. S. 24 r. W 9 r. to Beg.

January 25-1893

Survey made for R.P. Hunter of the above.



The above described tract was subdivided  
into 8 lots, each 49.65 ft wide,